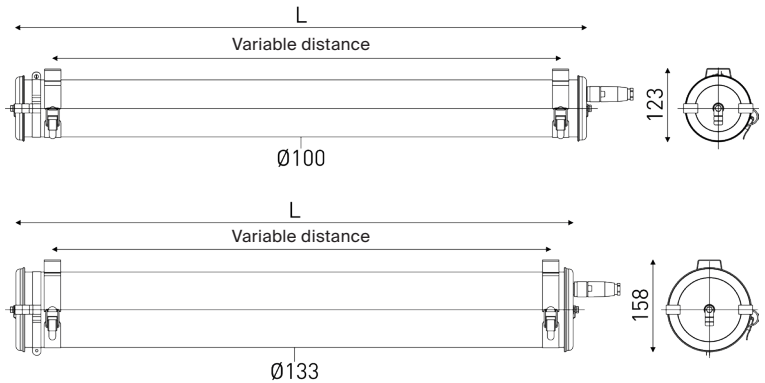
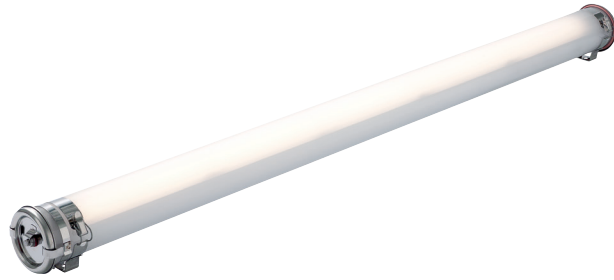


BERING

Technology	LED
Temperature	As low as -40 °C
Light output	1850 to 11100 lm



Key features

- Plug & Play installation by disconnectable plug
- Supports repeated on/off switching
- Suited to lighting large areas
- Durable and maintainable luminaire



Options

Code Ø100mm Ø133mm

Control gears

Switch-off warning function (for detector/timer)	RC	●	●
Integrated presence detector (length increased by 85mm)	IS	●	●

Colour temperature

3000 K	830	●	●
5000 K	850	●	●

Finishings

End caps and fixing straps in stainless steel 316 L	MR	●	●
---	----	---	---

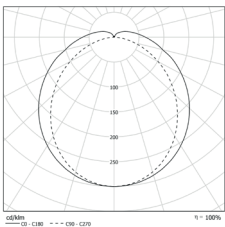
● Compatible ○ On request – Incompatible

Accessories

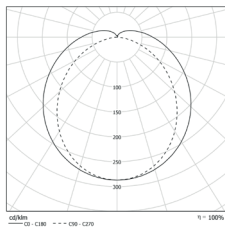
Extension kit (5 or 20 cm) for compliance (APSAD)	●	●
IP68 4-outlet junction box	●	●
Offset fixings	●	●

Photometry

Diameter 100 mm



Diameter 133 mm



Main references

Diameter 100 mm

Light output* (lm)	Designation	Code	P (W)	T (K)	L (mm)
1850	BER100 12H840 POME PS3 SA BRS	1560 5021	16	4000	697
2775	BER100 13H840 POME PS3 SA BRS	1560 5022	22		1007
3700	BER100 14H840 POME PS3 SA BRS	1560 5025	29		1307
4625	BER100 15H840 POME PS3 SA BRS	1560 5026	35		1607
5550	BER100 16H840 POME PS3 SA BRS	1560 5029	40		1850

Diameter 133 mm

Light output* (lm)	Designation	Code	P (W)	T (K)	L (mm)
5550	BER133 23H840 POME PS3 SA BRS	1660 5015	43	4000	987
7400	BER133 24H840 POME PS3 SA BRS	1660 5018	56		1287
9250	BER133 25H840 POME PS3 SA BRS	1660 5019	71		1587
11100	BER133 26H840 POME PS3 SA BRS	1660 5022	85		1850

* Light output of the luminaire

Specifications

Technical data

Light source	High-efficiency LED driver and modules 70,000 h L80/B10 at max. operating temperature CRI > 80
Optics	Special LED satin diffuser
Heat management	Aluminium heat sink
Control gear	Constant current driver (non-dimmable)
Power supply	220-240 V 50/60 Hz and 176-276 V DC Compatible with central source
Electrical class	Class I
Operating temperature	-40°C to +25°C
Connection	Disconnectable plug for Ø 8 to 10 mm cable (3 × 1.5 mm ²)
Fixing	2 reinforced stainless steel fixing straps with spring clip
Method of construction	One-piece housing with reinforced ingress protection Long-lasting ingress protection thanks to axial screw fitting

Materials

Housing	Food industry polycarbonate housing protected by a coextruded PMMA layer
End caps, fixing straps	Stainless steel 304 L
Gaskets	Silicone

Standards

Ingress protection	IP66, IP68, IP69K
Shock resistance	IK10
Fire resistance	650°C
Vibration resistance	Meets the severe application requirements of standard EN 60598-1 (tested according to IEC 60068-2-6)