

NEW

LED-Steep roof light fitting for Ex-Zone 2/22 Series nD822...

Applications:

Hazardous areas of Zones 2 (gas) and 22 (dust), e.g. cleanrooms, paint shops and spray booths.

Design:

Housing: Sheet steel, powder coated in light grey (RAL 7035), silicone foam gasket.

Glass cover: Impact resistant safety glass pane, frameless / hinged.

Central locking system: Operated by a 5mm allen key, inner hinges on the opposite side.

Reflector: Hinged; white painted sheet steel; detachable, carrying LED-modules and glare limitation modules.

Connection: 3 poles up to 4 mm².

Cable entries: 3 entries M25 x 1,5, (2 glands - one of them is plugged)

Standard: Facing downwards or forwards.

Mechanical installation:

Mounting accessories see spare parts/ accessories.

Technical Data:

LED: Line modules appr. 5,000K, CRI > 80,

Lifetime: L₇₀B₁₀ > 100.000h

L₈₀B₅₀ > 100.000h

L₉₀B₅₀ > 50.000h

each at max. ambient temperature, (see notes)

ECG: 220-240V AC/DC, 0 or 50-60Hz, overvoltage, overload and short circuit

Options:

- for connection to group or central battery (light fittings of version ZB only) or emergency mains respectively
- with monitoring module for monitoring the individual light fitting
- Control gear with DALI-interface for dimming (DIMD)

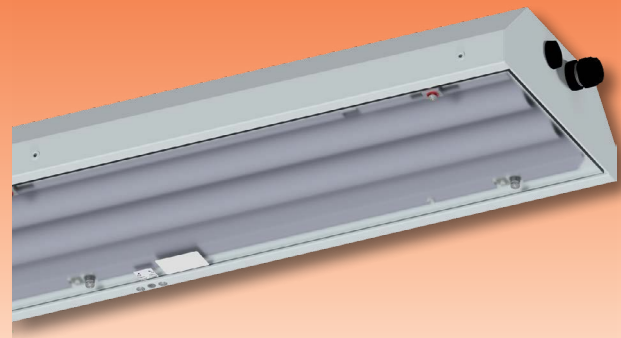
- housing made from stainless steel, painted
- prepared for 5-core cable looping system
- with through wiring system
- Installation in thermally insulated ceilings (acc. to EN60598)

STAINLESS STEEL
corrosion resistant

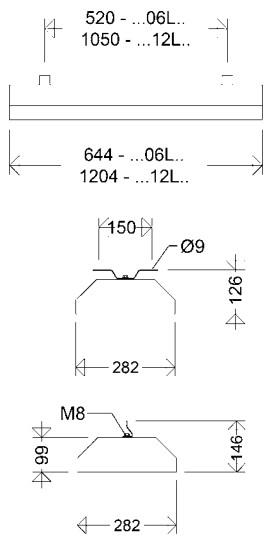
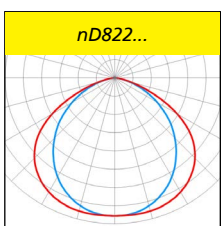
Auf
Open
Zu
Close
Ouvrir
Fermer

Product highlights:

- extremely flat and robust design
- perfect protection of the LED from mechanical or electrostatic damages with at the same time homogeneous illumination with glare limitation modules, no individual light points visible, comfortable perception of light, excellent glare limitation
- high colour rendering index CRI > 80, according to the workplace guide lines suitable for nearly all plant locations
- comfortable central locking system with internal hinges
- separate, frame for recessed installation or a swivel arm mounting system can easily be installed at a later stage, (frame for recessed installation not suitable for stainless steel version!)
- ECG and reflector with LED-modules **replacable by qualified personnel on-site**
- Suitability for paint booths LABS-tested according to VDMA 24364-C2-L



Note:
This light fitting is not suitable for application in areas with permanent high humidity in combination with only short periods of operation, such as sewage or stormwater retention tanks or water treatment plants.



Article no.	Type	Power consumption [W] *	Luminous flux [lm] *	Luminous efficacy [lm/W]	Ta max [°C]	Energy efficiency class	Substitute for **	Weight [kg] (without packing material)
-------------	------	-------------------------	----------------------	--------------------------	-------------	-------------------------	-------------------	--

nD822...

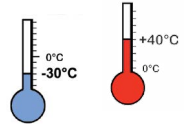
Ignition protection: ec

Marking:
II 3 G Ex ec IIC T4 Gc (Zone 2)
II 3 D Ex tc IIIC T80°C Dc (Zone 22)

Rated voltage: 220-240V AC/DC, 0 or 50-60Hz.

Permissible ambient temperature:

-30°C up to +40°C



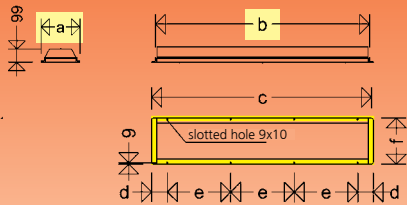
Looping the cable on one side:
All light fittings of series nD822... have got 2 cable entries on one small side of the housing for cable looping instead of the through wiring system. (3-pole looping standard, 5-pole looping at additional cost)

Notes:
Properties, limitations and details for controlling LED-light fittings: See „Technical Supplement“.
All technical data is relevant at the time of print. Actual technical data can be found in the internet under www.schuch.de.

82200 0002	nD822 06L42	28	4.110	147	40	A++	2 x 36W	7,9
82200 0003	nD822 06L60	40	5.600	140	40	A++	2 x 58W	7,9
82200 0050	nD822 12L42	28	4.260	152	40	A++	2 x 36W	13,6
82200 0051	nD822 12L60	40	5.900	148	40	A++	2 x 58W	14,0
82200 0052	nD822 12L85	54	8.350	155	40	A++	> 2 x 58W	14,0
82200 0053	nD822 12L120	79	11.470	145	40	A++	>3 x 58W	14,0

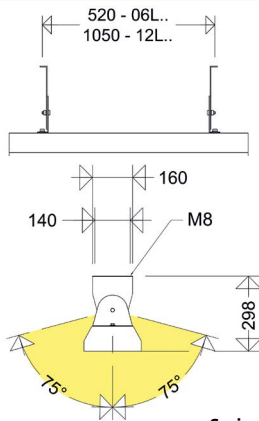
* see notes ** The given information is for rough orientation only. In each individual case a lighting calculation is necessary.

Installation dimensions



Type	a	b	c	d	e	f
EB 82. 06L	302	660	710	55	300	348
EB 82. 12L	302	1224	1270	125	340	348

Attention: When planning the opening for recess installation please allow additional clearance for the cable glands.



Swivel range 150°

Mounting material

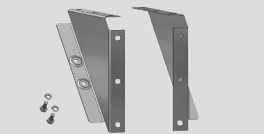
Suspension brackets H8V P



Ceiling brackets 15A P



Wall/ceiling angles WD 45 P



Further accessories as well as carrier rail systems and through wiring systems are available.

Frame for Recessed Installation

retrofit possible!

Light fittings of series nD822... can be equipped with a frame even at a later stage.

Mounting by means of M5 bolts to the long sides of the housing (see drawing).

Article No.	Type	
18091 0020	EB 82. 06L	frame for narrow housing, e821 06L, nD822 06L
18091 0021	EB 82. 12L	frame for narrow housing, e821 12L, nD822 12L

Swivel Arm Mounting System

retrofit possible!

Light fittings of series nD822... can be equipped with a swivel arm mounting system at any time.

The swivel arms are fixed to the suspen-

sion points at the upper side of the housing. Swivel range: $\pm 75^\circ$ (see dimensions in diagram).

Article No.	Type	
18092 0001	SWA 181/182	for all wattages consisting of: 2 swivel arms with bolts M8



Explosion protected
Light Fittings

Accessories / Spare Parts

Article No.	Type	
Spare glasses		
82101 9001	821 06L	spare glass for e821 06L, nD822 06L
82101 9002	821 12L	spare glass for e821 12L, nD822 12L
Cable entries/cable glands		
90117 9006	2537 G	ex-protected gland of size M25 x 1,5 with nut
90119 9001	2539 G	ex-protected gland of size M25 x 1,5 with nut and plug
90118 9006	2538 G	ex-protected plug of size M25 x 1,5 with nut
Mounting material		
90001 0002	H8V P	2 suspension eyes, stainless steel
90000 0002	15A P	2 ceiling brackets, hot galvanized steel
90032 0002	15AV P	2 ceiling brackets, stainless steel
26000 0005	WD 45 P	2 wall/ceiling angle, steel