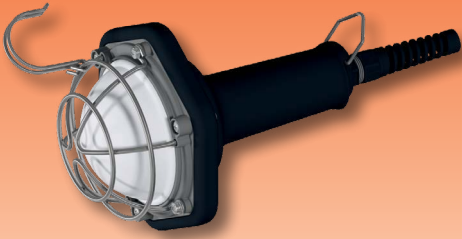


**NEW**

## LED Handlamp for Ex-Zones 1/21 Series e9310



**Applications:**

For use as work lighting in hazardous areas of Zones 1, 2 and 21, 22 which cannot be illuminated by any general lighting equipment.

**Design:**

**Handle:** Made of rubber (EPDM), with suspension eye, cable relief, cable entry

M20 x 1,5mm<sup>2</sup> with bend protection.

**Electrical kit:** Diecast aluminium, with LED-Module and integrated ECG.

**Cover:** Polycarbonate, frosted

**Wire guard:** Round steel, cage hook for suspension purpose.

**General purpose:** Any operating position.

**Technical Data:**

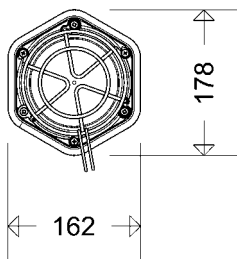
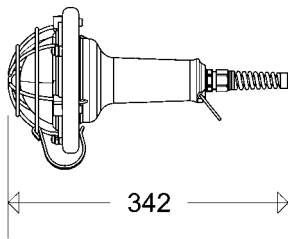
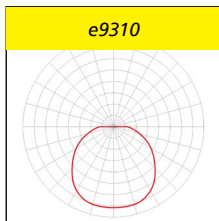
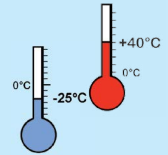
LED: approx. 6,500K, CRI typically 80

Rated voltage: 220 - 240V AC/DC

Admissible ambient temperature: -25°C up to +40°C

**Product highlights:**

- robust design for reliable and safe long-term use
- sturdy handhold
- shock resistant PC-cover
- additional safety due to robust wire guard
- high degree of protection IP66 (dust-proof and jet-proof)
- user-friendly and for various applications
- light weight
- suspension eye and cage hook
- homogeneous illumination by using frosted cover, no particular light points visible, comfortable perception of light, brilliant glare limitation
- ATEX-certified for gas and dust hazardous areas (Zones 1/21 and 2/22)
- ATEX-certified for explosion group II C and temperature class T4
- wide range of admissible ambient temperature from -25°C to +40°C



Article no.	Type	Power consumption [W] *	Luminous flux [lm] *	Luminous efficacy [lm/W]	Energy efficiency class	Weight [kg] (without packing material)
-------------	------	-------------------------	----------------------	--------------------------	-------------------------	--

**e9310**



II 2G Ex eb mb  
op is IIC T4 Gb

II 2D Ex op is tb  
IIIC T80°C Db

IP66



EC-Type Examination Certificate:

IBExU 19 ATEX 1134

Other approvals:

IECEX IBE 19.0028

Marking:

II 2G Ex eb mb op is IIC T4 Gb (Zone 1)

II 2D Ex op is tb IIIC T80°C Db (Zone 21)

Ignition protection: „e” (increased safety)

93100 0001	<b>e9310F</b>	11	600	55	A++	1,3
------------	---------------	----	-----	----	-----	-----

\* see notes

**Notes:**

Properties, limitations and details for controlling LED-light fittings: See „Technical Supplement”.

All technical data is relevant at the time of print.

Actual technical data can be found in the internet under [www.schuch.de](http://www.schuch.de).

## Accessories / Spare Parts

Article no.	Type	
93101 9003	<b>9308F</b>	spare glass, frosted
93101 9004	<b>930B</b>	spare wire guard, with suspension hook
93101 9002	<b>93KT</b>	cable gland with bend protection